

WAAS CH <b>81813</b> <b>W31A</b>	APP CRS <b>309°</b>	Rwy Idg TDZE Apt Elev	<b>5997</b> <b>174</b> <b>178</b>
--	------------------------	-----------------------------	---

# RNAV (GPS) RWY 31

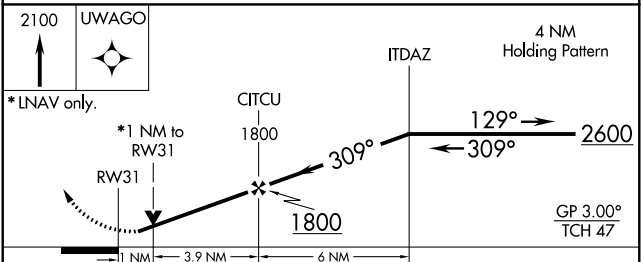
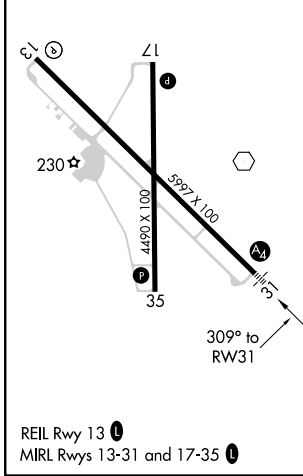
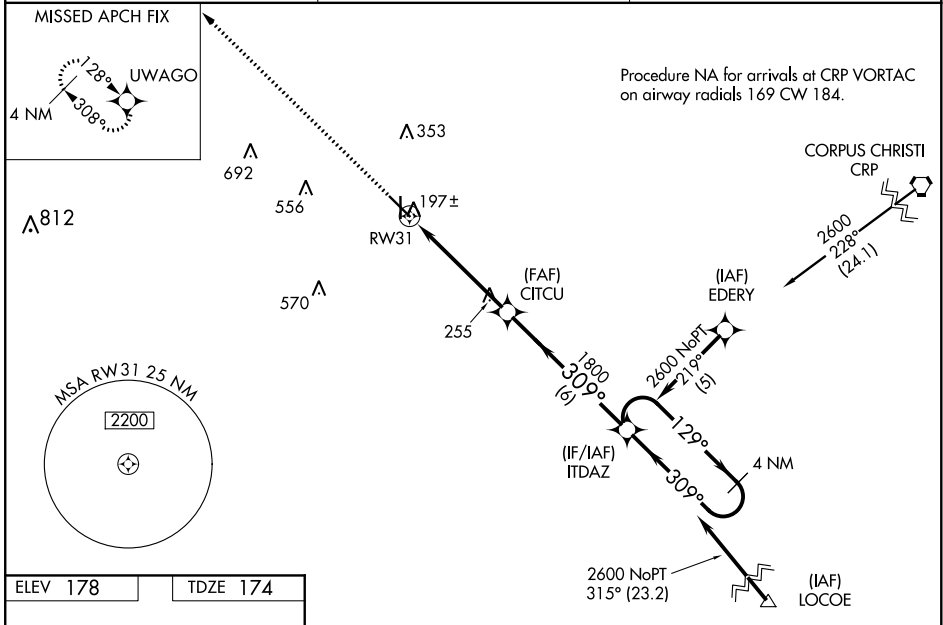
ALICE INTL (ALI)

⚠ For uncompensated Baro-VNAV systems, LNAV/VNAV NA below -15°C (5°F) or above 48°C (118°F). DME/DME RNP-0.3 NA. Visibility reduction by helicopters NA. When local altimeter setting not received, use Nueces County altimeter setting: increase DA by 56 feet and visibility LNAV/VNAV all Cats to ¾ mile; increase all MDA 60 feet and LNAV visibility Cat C, D to 1 mile. For inop MALS, increase LPV all Cats visibility to ¾ mile. For inop MALS with Nueces County altimeter setting, increase LNAV/VNAV all Cats and LNAV Cats C, D visibility to 1 ½ mile. VDP NA when using Nueces County altimeter setting.



MALS  
MISSED APPROACH:  
Climb to 2100 direct  
UWAGO and hold.

ASOS <b>119.225</b>	KINGSVILLE APP CON * <b>119.9 290.45</b>	UNICOM <b>123.0 (CTAF) 0</b>
------------------------	---	---------------------------------



CATEGORY	A	B	C	D
LPV DA		437-¾	263 (300-¾)	
LNAV/VNAV DA		467-¾	293 (300-¾)	
LNAV MDA		520-¾	346 (400-¾)	
CIRCLING	600-1 422 (500-1)	640-1 462 (500-1)	660-1½ 482 (500-1½)	740-2 562 (600-2)

SC-3, 25 FEB 2021 to 25 MAR 2021

SC-3, 25 FEB 2021 to 25 MAR 2021