

# WYLIE FIVE DEPARTURE

SL-6039 (FAA)

DALLAS-FORT WORTH, TEXAS

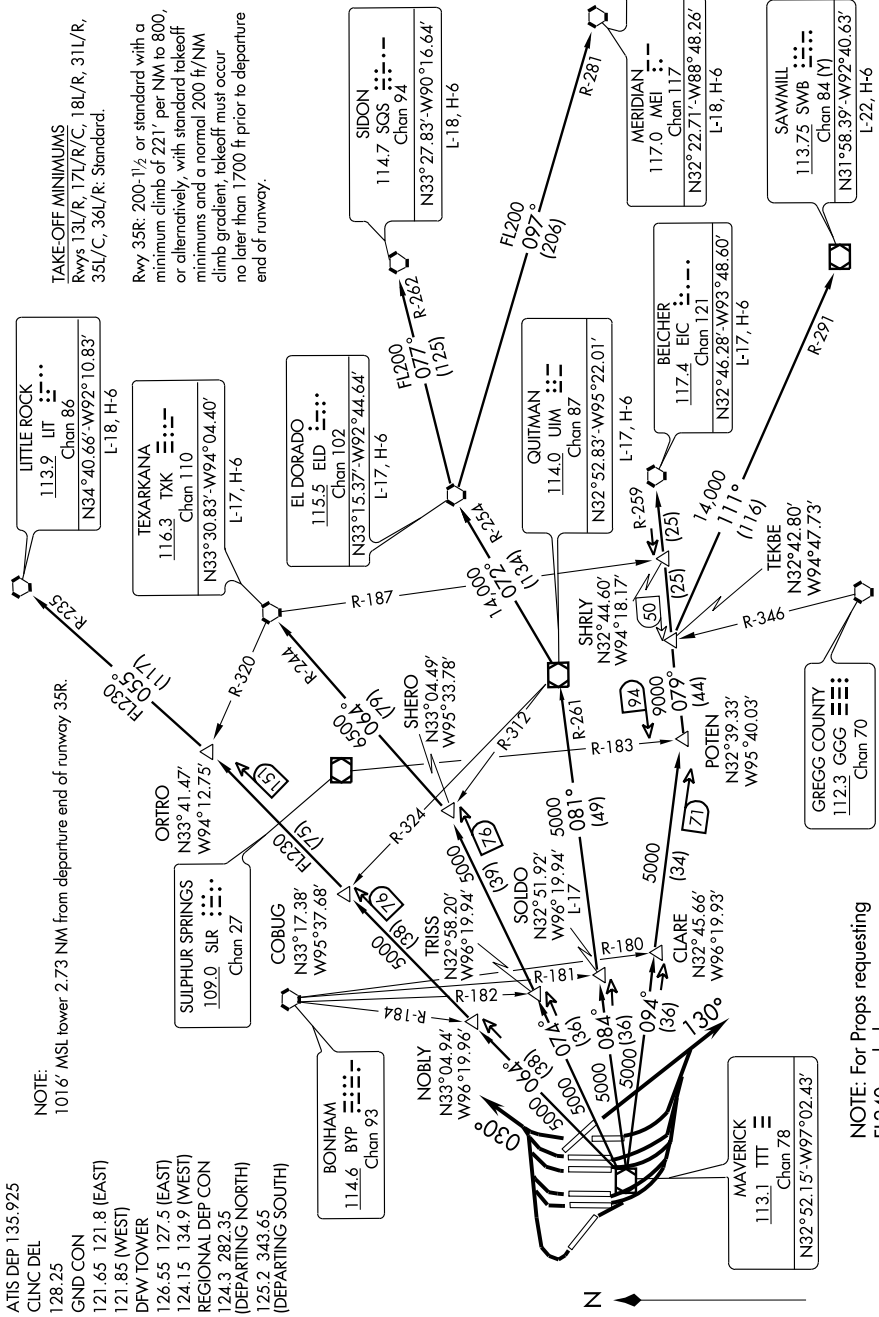
SC-2, 25 AUG 2011 to 22 SEP 2011

- ATIS DEP 135.925
- CLINC DEL 128.25
- GND CON 121.65 121.8 (EAST)
- 121.85 (WEST)
- DFW TOWER 126.55 127.5 (EAST)
- 124.15 134.9 (WEST)
- REGIONAL DEP CON 124.3 282.35
- (DEPARTING NORTH) 125.2 343.65
- (DEPARTING SOUTH)

NOTE:  
101.6' MSL tower 2.73 NM from departure end of runway 35R.

**TAKE-OFF MINIMUMS**  
Rwys 13L/R, 17L/R/C, 18L/R, 31L/R, 35L/C, 36L/R: Standard.

Rwy 35R: 200'-1/2 or standard with a minimum climb of 221' per NM to 800, or alternatively, with standard takeoff minimums and a normal 200 ft/NM climb gradient; takeoff must occur no later than 1700 ft prior to departure end of runway.



NOTE: For Props requesting FL240 and above.

(NARRATIVE ON FOLLOWING PAGE)

NOTE: Chart not to scale

# WYLIE FIVE DEPARTURE

SC-2, 25 AUG 2011 to 22 SEP 2011