

VOR/DME TTT 113.1 Chan 78	APP CRS 312°	Rwy Idg TDZE Apt Elev	9301 581 607
---	------------------------	-----------------------------	---

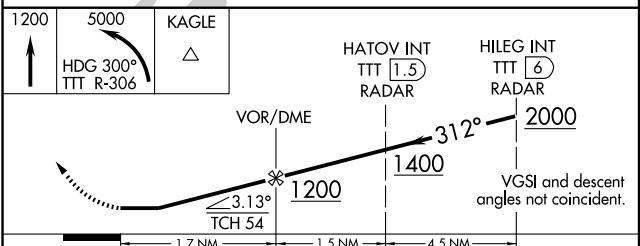
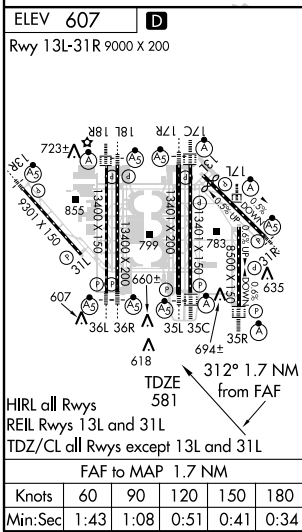
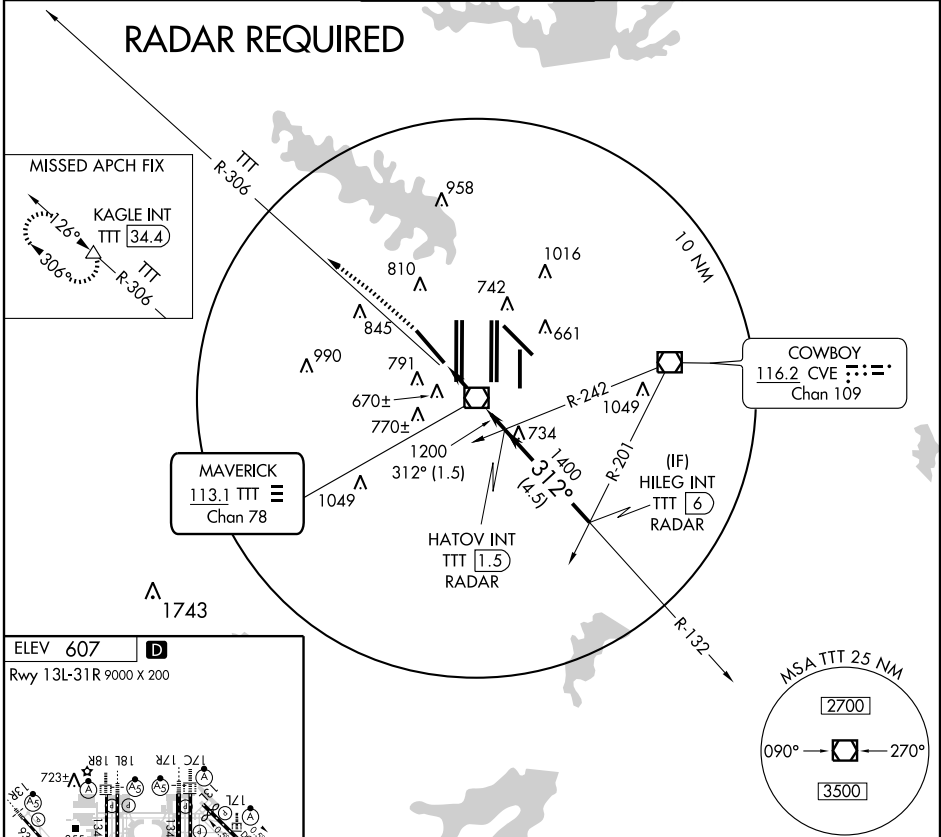
VOR RWY 31L

DALLAS-FORT WORTH INTL (DFW)

MISSED APPROACH: Climb to 1200 then climbing left turn to 5000 via heading 300° and TTT R-306.36 to KAGLE INT/TTT 34.4 DME and hold.

ATIS ARR 123.775 DEP 135.925	REGIONAL APP CON 135.5 125.2	DFW TOWER 126.55 127.5 EAST 124.15 134.9 WEST	GND CON 121.65 121.8 EAST 121.85 WEST	CLNC DEL 128.25
--	--	---	---	---------------------------

RADAR REQUIRED



CATEGORY	A	B	C	D
S-31L	1020/50	439 (500-1)	1020/60 439 (500-1½)	1020-1½ 439 (500-1½)

SC-2, 25 AUG 2011 to 22 SEP 2011

SC-2, 25 AUG 2011 to 22 SEP 2011