

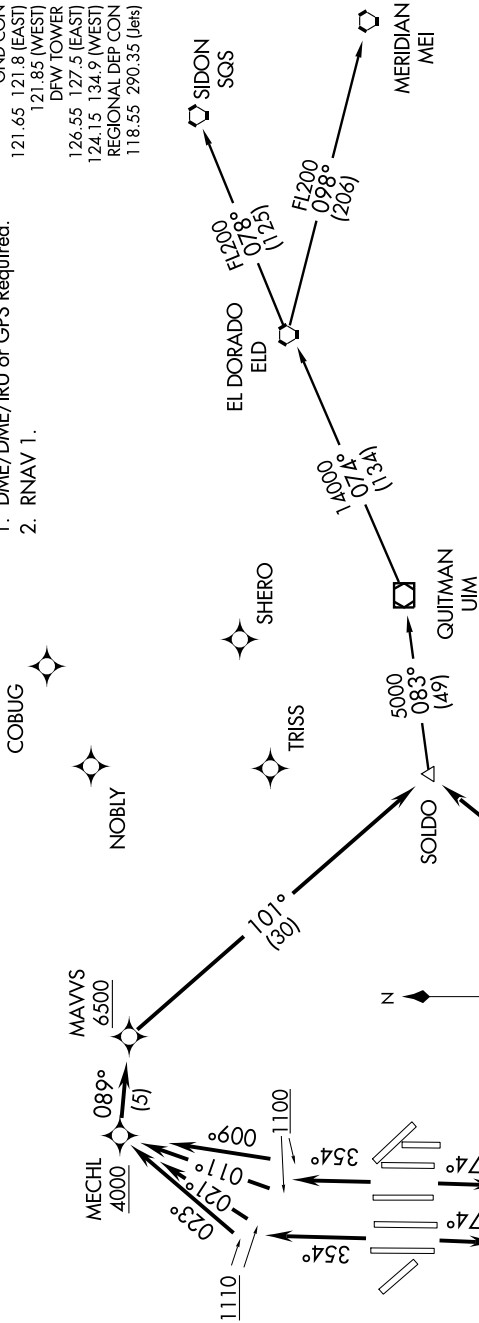
SOLDO TWO DEPARTURE (RNAV)

SC-2, 25 AUG 2011 to 22 SEP 2011

NOTE: For jets requesting FL180 or above.
NOTE: RADAR required.

ATIS 135.925
CLNC DEL
128.25 348.6
GND CON
121.65 121.8 (EAST)
121.85 (WEST)
DFW TOWER
126.55 127.5 (EAST)
124.15 134.9 (WEST)
REGIONAL DEP CON
118.55 290.35 (jets)

NOTE:
1. DME/DME/IRU or GPS Required.
2. RNAV 1.



TAKE-OFF MINIMUMS

Rwys 17C/R, 18L/R: Standard with a minimum ATC climb of 500' per NM to 5000.
Rwy 35C: Standard with a minimum ATC climb of 536' per NM to 6500.
Rwy 35L: Standard with a minimum ATC climb of 530' per NM to 6500.
Rwy 36L/R: Standard with a minimum ATC climb of 500' per NM to 6500.
Rwy 13L/R, 17L, 31L/R, 35R: NA- ATC request.

NOTE:
Take-off Rwy 35C/L, 36L/R:
Do not exceed 230K until MAVWS.
Take-off Rwy 17C/R, 18L/R:
Do not exceed 230K until TREXX.

(NARRATIVE ON FOLLOWING PAGE)

NOTE: Chart not to scale.

SC-2, 25 AUG 2011 to 22 SEP 2011