

RNAV (GPS) RWY 36R

DALLAS-FORT WORTH INTL (DFW)

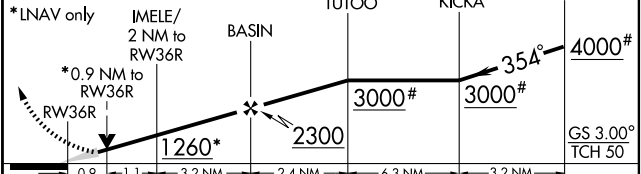
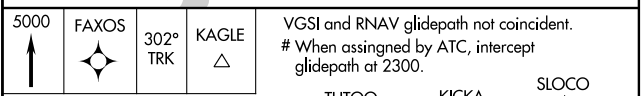
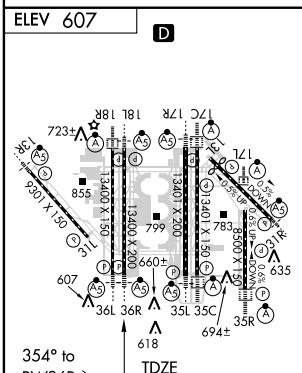
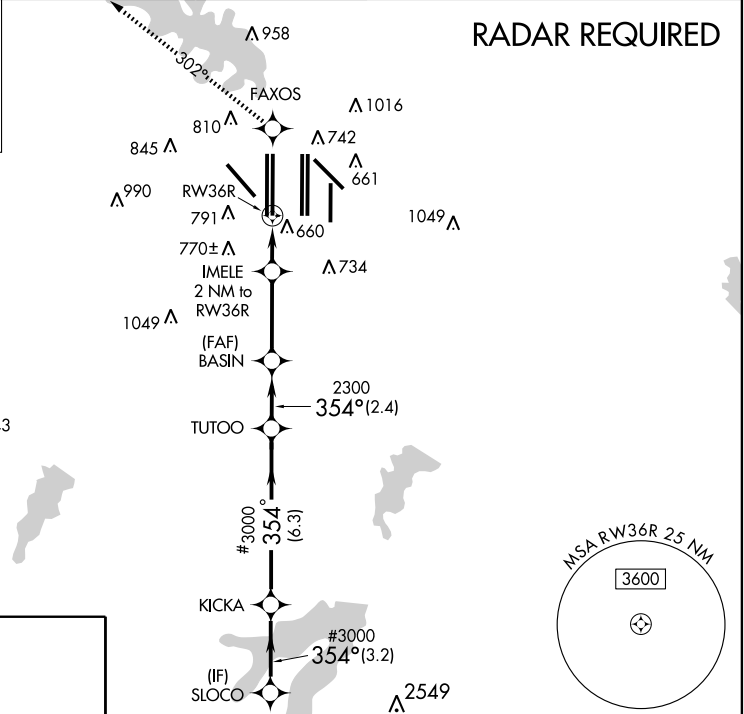
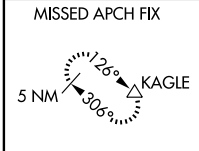
WAAS CH 87005 W36A	APP CRS 354°	Rwy Idg 13400 TDZE 581 Apr Elev 607
--	------------------------	--

▼ For inoperative MALS, increase LNAV Cat D visibility to RVR 6000. For uncompensated Baro-VNAV systems, LNAV/VNAV NA below -16°C (4°F) or above 47°C (116°F). DME/DME RNP -0.3 NA.



MISSED APPROACH: Climb to 5000 direct FAXOS and via 302° track to KAGLE and hold.

ARR 123.775	ATIS 135.925	DEP 118.425	REGIONAL APP CON 126.55 127.5 EAST 124.15 134.9 WEST	DFW TOWER 121.65 121.8 EAST 121.85 WEST	GND CON 121.65 121.8 EAST 121.85 WEST	CLNC DEL 128.25
-----------------------	------------------------	-----------------------	--	---	---	---------------------------



CATEGORY	A	B	C	D
LPV DA		781/24	200 (200-1/2)	
LNAV/VNAV DA		941/40	360 (400-3/4)	
LNAV MDA		940/24	359 (400-1/2)	940/50 359 (400-1)

HIRL all Rwy's
REIL Rwy's 13L and 31L
TDZ/CL all Rwy's except 13L and 31L

SC-2, 25 AUG 2011 to 22 SEP 2011

SC-2, 25 AUG 2011 to 22 SEP 2011