

PODDE THREE DEPARTURE (RNAV)

SC-2, 25 AUG 2011 to 22 SEP 2011

TAKE-OFF MINIMUMS

Rwys 17C/R, 18L/R: Standard with minimum ATC climb of 500' per NM to 5000.
 Rwys 35C/L, 36L/R: Standard with minimum ATC climb of 500' per NM to 5500.
 Rwys 13L/R, 17L, 31L/R, 35R: NA - ATC request.

NOTE:
 Rwys 35L/C, 36L/R: Do not exceed 230K until KMART WP.
 Rwys 17C/R, 18L/R: Do not exceed 230K until LARRN WP.

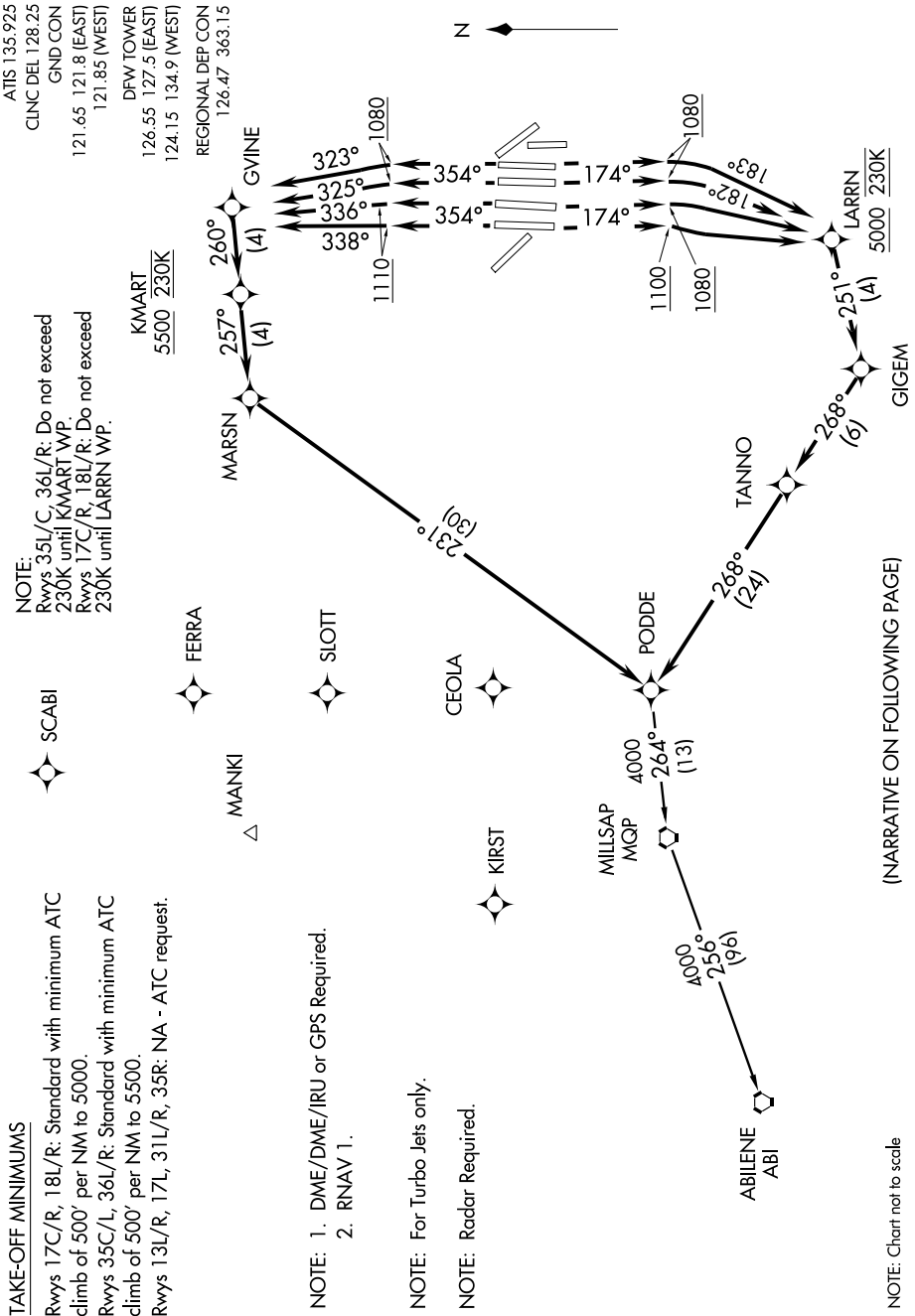
ATIS 135.925
 CLNC DEL 128.25
 GND CON
 121.65 121.8 (EAST)
 121.85 (WEST)
 DFW TOWER
 126.55 127.5 (EAST)
 124.15 134.9 (WEST)
 REGIONAL DEP CON
 126.47 363.15

NOTE: 1. DME/DME/IRU or GPS Required.
 2. RNAV 1.

NOTE: For Turbo Jets only.

NOTE: Radar Required.

NOTE: Chart not to scale



(NARRATIVE ON FOLLOWING PAGE)

SC-2, 25 AUG 2011 to 22 SEP 2011

PODDE THREE DEPARTURE (RNAV)