

LOWGN THREE DEPARTURE (RNAV)

TAKE-OFF MINIMUMS

Rwys 17C/R, 18L/R, 35L/C, 36L/R: Standard with minimum climb of 500' per NM to 5000.
Rwys 13L/R, 17L, 31L/R, 35R: NA- air traffic.

NOTE: RADAR Required.

NOTE: For use by TURBO JET aircraft only.

NOTE:

1. DME/DME/IRU or GPS Required.
2. RNAV 1.

NOTE: For non-GPS equipped aircraft using ROLLS TRANSITION, ADM, UKW, DUC and LAW must be operational.

ATIS 135.925

CLNC DEL 128.25

GND CON

121.65 121.8 (EAST)

121.85 (WEST)

DFW TOWER

126.55 127.5 (EAST)

124.15 134.9 (WEST)

REGIONAL DEP CON

118.55 290.35 (RWY 17R/C)

126.47 363.15 (RWY 18L/R)

125.12 353.95 (RWYS 35L/C and 36L/R)

NOTE: TAKE-OFF RWYS 18L/R: Do not exceed 240K until YAMEL.

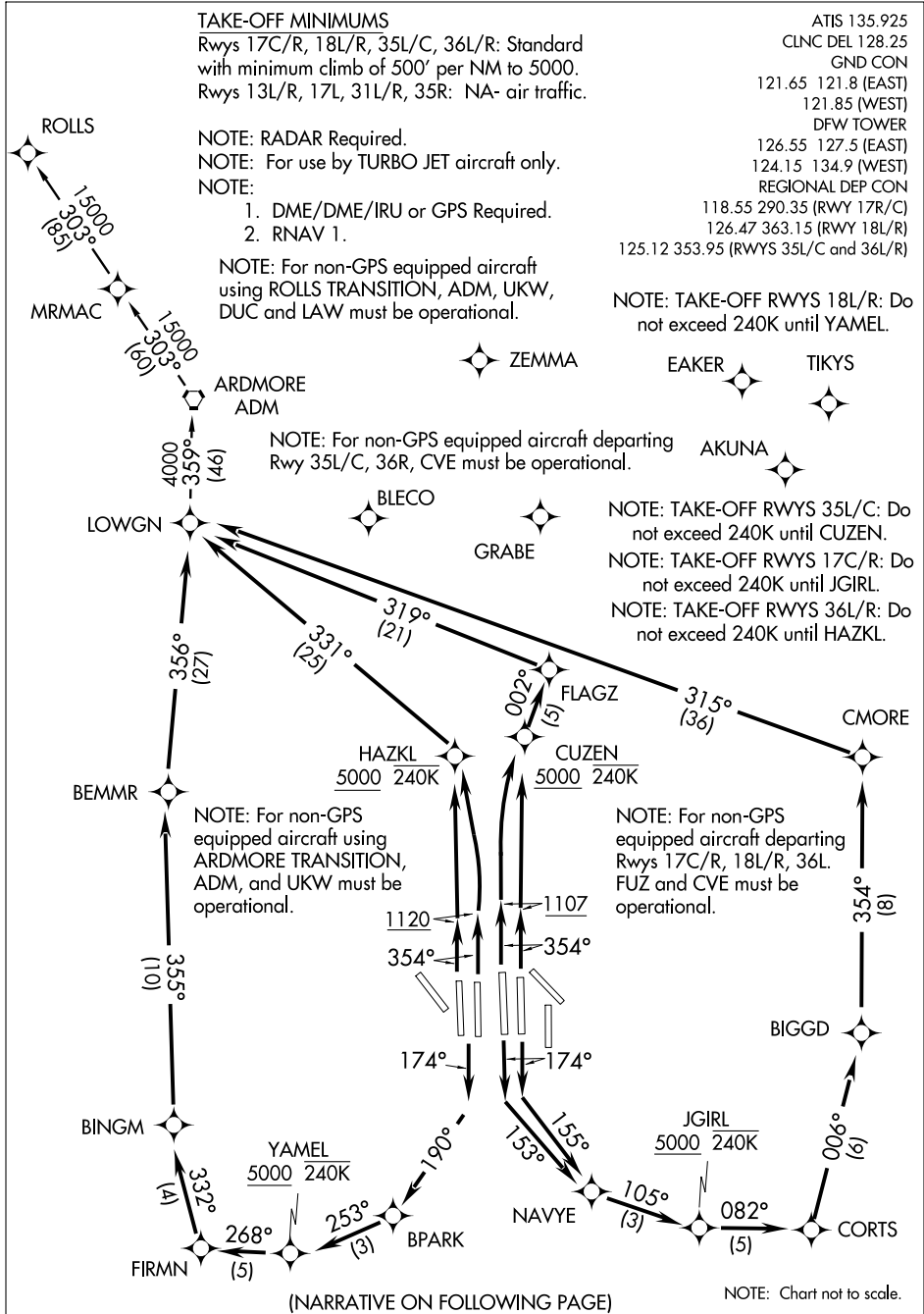
NOTE: TAKE-OFF RWYS 35L/C: Do not exceed 240K until CUZEN.

NOTE: TAKE-OFF RWYS 17C/R: Do not exceed 240K until JGIRL.

NOTE: TAKE-OFF RWYS 36L/R: Do not exceed 240K until HAZKL.

NOTE: For non-GPS equipped aircraft using ARDMORE TRANSITION, ADM, and UKW must be operational.

NOTE: For non-GPS equipped aircraft departing Rwys 17C/R, 18L/R, 36L. FUZ and CVE must be operational.



(NARRATIVE ON FOLLOWING PAGE)

NOTE: Chart not to scale.

SC-2, 25 AUG 2011 to 22 SEP 2011

SC-2, 25 AUG 2011 to 22 SEP 2011

LOWGN THREE DEPARTURE (RNAV)