

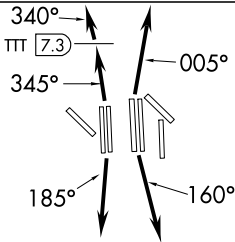
JOE POOL FOUR DEPARTURE

SL-6039 (FAA)

DALLAS-FORT WORTH INTL (DFW)

DALLAS-FORT WORTH, TEXAS

ATIS 135.925
 CLNC DEL 125.25
 GND CON
 (EAST) 121.65 121.8
 (WEST) 121.85
 DFW TOWER
 (EAST) 126.55 127.5
 (WEST) 124.15 134.9
 REGIONAL DEP CON
 (Departing South) 125.12 319.85
 (Departing North via TTT R-186 or TTT R-176)
 126.47 363.15
 (Departing North via TTT R-166 or TTT R-156)
 118.55 290.35



TAKE-OFF MINIMUMS:

Rwys 13R, 13L, 17C, 17L, 17R, 18L, 18R, 31L, 31R, 35C, 35L, 36L, 36R: Standard.
 Rwy 35R: 200-1½ or standard with a minimum climb of 221' per NM to 800, or alternatively, with standard takeoff minimums and a normal 200'/NM climb gradient, takeoff must occur no later than 1,700' prior to DER.

NOTE: Rwys 17C/R, 18L/R, 35L/C, 36L/R: DME Required.

MAVERICK
 113.1 TTT
 Chan 78
 N32°52.15'-W97°02.43'

CEDAR CREEK
 114.8 CQY
 Chan 95

LEONA
 110.8 LOA
 Chan 45

NAVASOTA
 115.9 TNV
 Chan 106

GLEN ROSE
 115.0 JEN
 Chan 97

WACO
 115.3 ACT
 Chan 100
 N31°39.74'-W97°16.14'
 L-19, H-6

HOARY
 N30°34.63'
 W97°46.52'
 L-19-21, H-7

SAN ANTONIO
 116.8 SAT
 Chan 115
 N29°38.64'
 W98°27.68'
 L-19,H-7

COLLEGE STATION
 113.3 CLL
 Chan 80
 N30°36.30'-W96°25.24'
 L-19-21,H-7

CENTEX
 112.8 CWK
 Chan 75

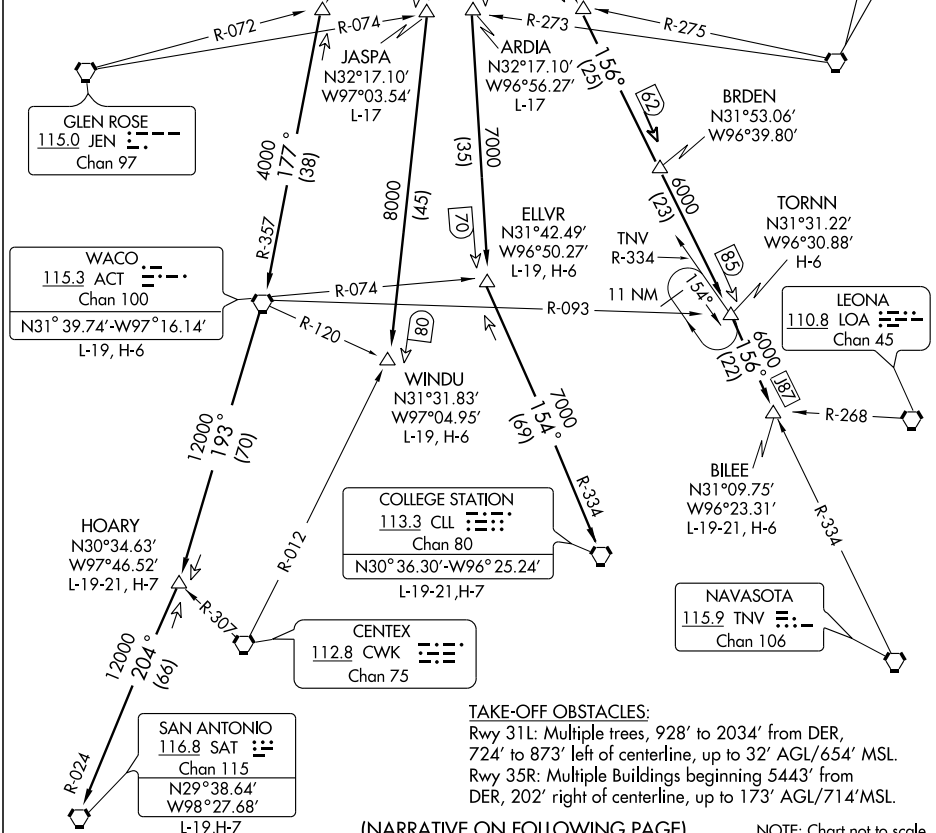
WINDU
 N31°31.83'
 W97°04.95'
 L-19, H-6

ELLVR
 N31°42.49'
 W96°50.27'
 L-19, H-6

ARDIA
 N32°17.10'
 W96°56.27'
 L-17

BRDEN
 N31°53.06'
 W96°39.80'

TORNNN
 N31°31.22'
 W96°30.88'
 H-6



TAKE-OFF OBSTACLES:

Rwy 31L: Multiple trees, 928' to 2034' from DER, 724' to 873' left of centerline, up to 32' AGL/654' MSL.
 Rwy 35R: Multiple Buildings beginning 5443' from DER, 202' right of centerline, up to 173' AGL/714'MSL.

(NARRATIVE ON FOLLOWING PAGE)

NOTE: Chart not to scale

SC-2, 25 AUG 2011 to 22 SEP 2011

SC-2, 25 AUG 2011 to 22 SEP 2011

JOE POOL FOUR DEPARTURE