

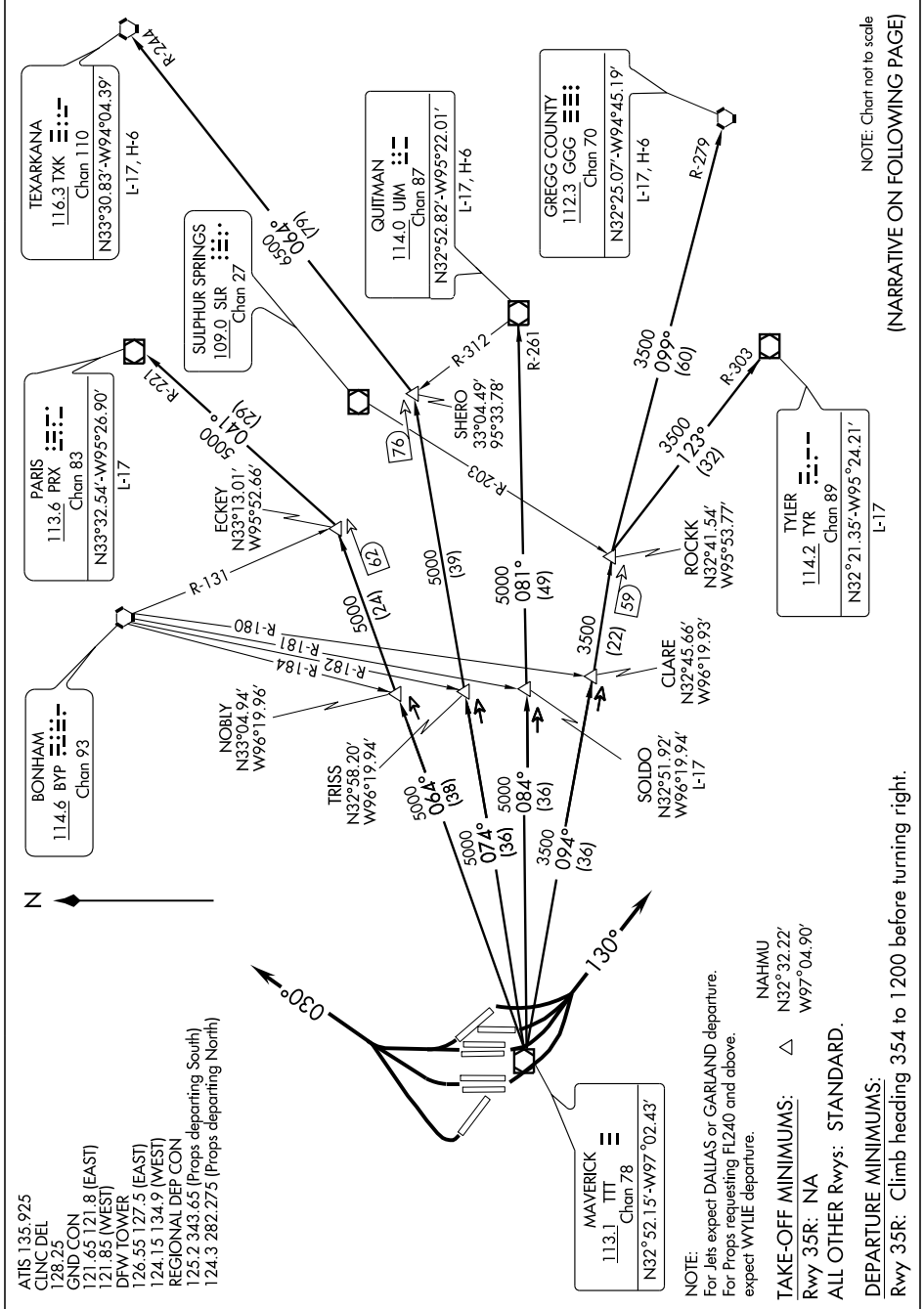
HUBBARD SIX DEPARTURE

SL-6039 (FAA)

DALLAS-FORT WORTH INTL (DFW)

DALLAS-FORT WORTH, TEXAS

SC-2, 25 AUG 2011 to 22 SEP 2011



NOTE: Chart not to scale
(NARRATIVE ON FOLLOWING PAGE)

SC-2, 25 AUG 2011 to 22 SEP 2011

HUBBARD SIX DEPARTURE

DALLAS-FORT WORTH, TEXAS

DALLAS-FORT WORTH INTL (DFW)

NOTE: For Jets expect DALLAS or GARIAND departure.
For Props requesting FL240 and above, expect WYLE departure.

NAHMU
N32°32.22'
W97°04.90'

TAKE-OFF MINIMUMS: △
Rwy 35R: NA

ALL OTHER Rwys: STANDARD.

DEPARTURE MINIMUMS:
Rwy 35R: Climb heading 354 to 1200 before turning right.