

GRABE THREE DEPARTURE (RNAV)

ATIS 135.925
 CLNC DEL 128.25
 GND CON
 121.65 121.8 (EAST)
 121.85 (WEST)
 DFW TOWER
 126.55 127.5 (EAST)
 124.15 134.9 (WEST)
 REGIONAL DEP CON
 118.55 290.35 (RWY 17R/C)
 126.47 363.15 (RWY 18L/R)
 125.12 353.95 (RWYS 35L/C AND 36L/R)

TAKEOFF MINIMUMS:
 Rws 13L/R, 17L, 31L/R, 35R: NA - air traffic
 Rws 17C/R, 18L/R, 35L/C, 36L/R: Standard
 with a minimum climb of 500' per NM to 5000.

OKMULGEE
OKM

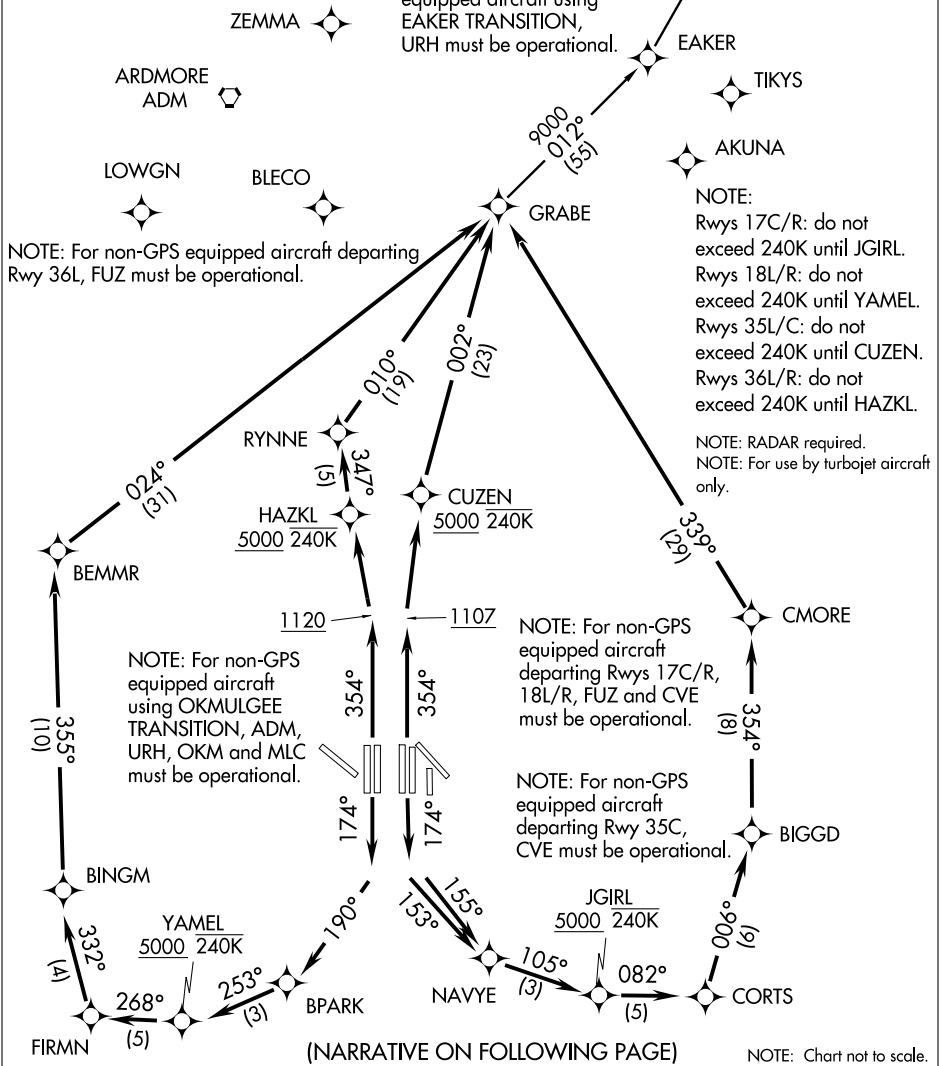
NOTE:
 1. DME/DME/IRU or GPS Required.
 2. RNAV 1.
NOTE: For non-GPS
 equipped aircraft using
 EAKER TRANSITION,
 URH must be operational.

NOTE:
 Rws 17C/R: do not
 exceed 240K until JGIRL.
 Rws 18L/R: do not
 exceed 240K until YAMEL.
 Rws 35L/C: do not
 exceed 240K until CUZEN.
 Rws 36L/R: do not
 exceed 240K until HAZKL.

NOTE: RADAR required.
NOTE: For use by turbojet aircraft
 only.

SC-2, 25 AUG 2011 to 22 SEP 2011

SC-2, 25 AUG 2011 to 22 SEP 2011



(NARRATIVE ON FOLLOWING PAGE)