

DALLAS NINE DEPARTURE

SL-6039 (FAA)

DALLAS-FORT WORTH INTL (DFW)
DALLAS-FORT WORTH, TEXAS

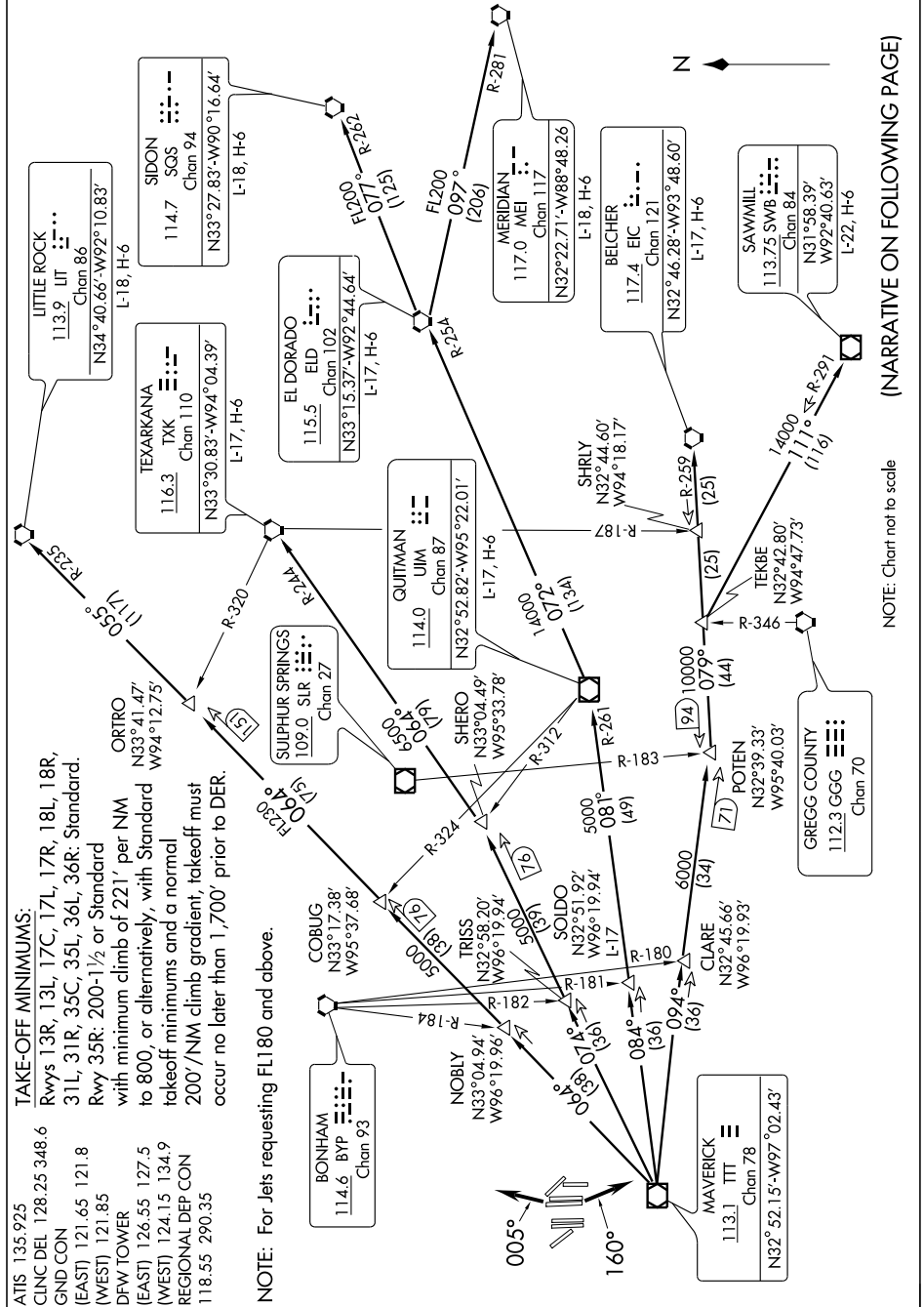
SC-2, 25 AUG 2011 to 22 SEP 2011

TAKE-OFF MINIMUMS:

ATIS 135.925
 CINC DEL 128.25 348.6
 GND CON
 (EAST) 121.65 121.8
 (WEST) 121.85
 DFW TOWER
 (EAST) 126.55 127.5
 (WEST) 124.15 134.9
 REGIONAL DEP CON
 118.55 290.35

Rwys 13R, 13L, 17C, 17L, 17R, 18L, 18R,
 31L, 31R, 35C, 35L, 36L, 36R: Standard.
 Rwy 35R: 200-1½ or Standard
 with minimum climb of 221' per NM
 to 800, or alternatively, with Standard
 takeoff minimums and a normal
 200'/NM climb gradient, takeoff must
 occur no later than 1,700' prior to DER.

NOTE: For Jets requesting FL180 and above.



NOTE: Chart not to scale

(NARRATIVE ON FOLLOWING PAGE)