

CLARE TWO DEPARTURE (RNAV)

SC-2, 25 AUG 2011 to 22 SEP 2011

NOTE:

- 1. DME/DME/IRU or GPS Required
- 2. RNAV 1.

NOTE: For jets requesting FL180 or above.
NOTE: RADAR required.

ATIS 135.925
CLNC DEL 128.25 348.6
GND CON
121.65 121.8 (EAST)
121.85 (WEST)
DFW TOWER
126.55 127.5 (EAST)
124.15 134.9 (WEST)
REGIONAL DEP CON
118.55 290.35 (Ints)

NOTE: TAKE-OFF RWYS 35L/C, 36L/R: Do not exceed 230K until MAVS WP.
NOTE: TAKE-OFF RWYS 17C/R, 18L/R: Do not exceed 230K until TREX WP.

TAKE-OFF MINIMUMS

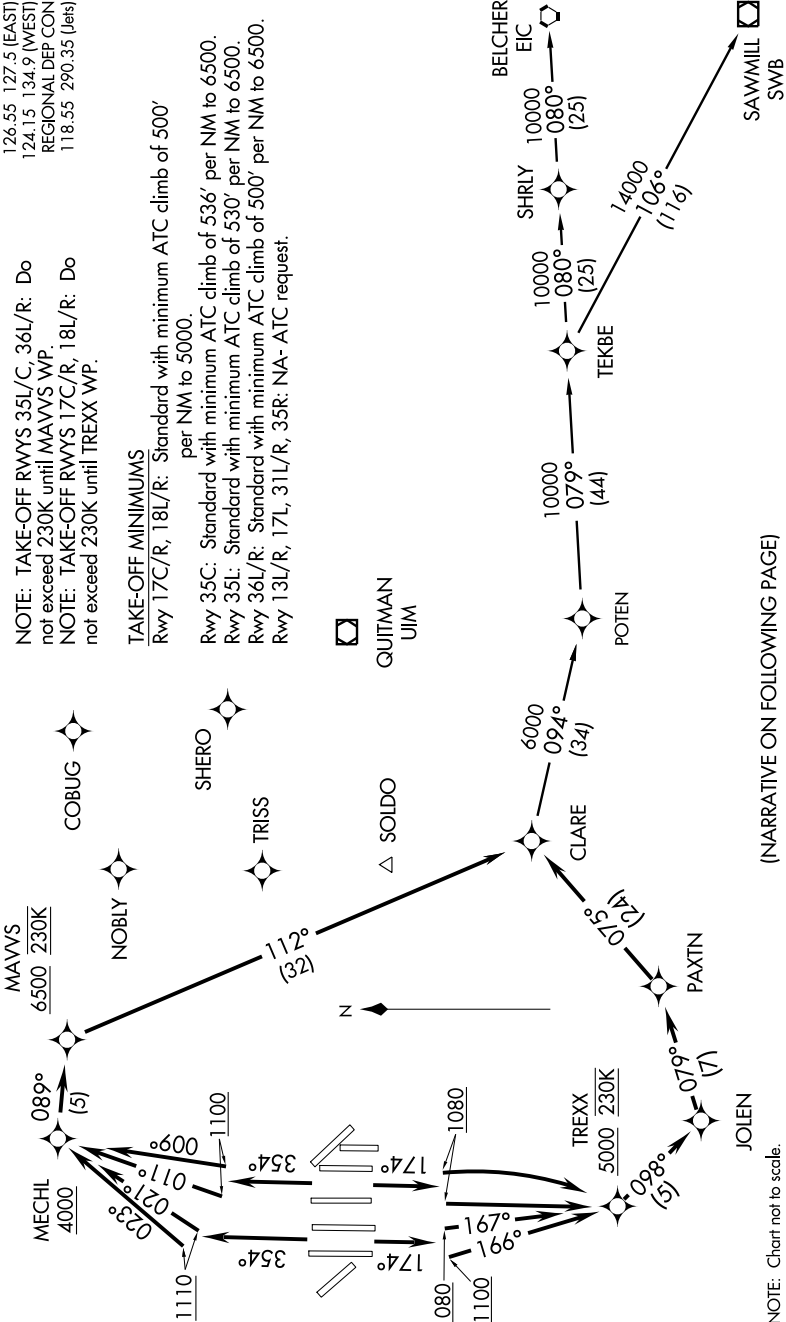
Rwy 17C/R, 18L/R: Standard with minimum ATC climb of 500' per NM to 5000.

Rwy 35C: Standard with minimum ATC climb of 536' per NM to 6500.

Rwy 35L: Standard with minimum ATC climb of 530' per NM to 6500.

Rwy 36L/R: Standard with minimum ATC climb of 500' per NM to 6500.

Rwy 13L/R, 17L, 31L/R, 35R: NA- ATC request.



NOTE: Chart not to scale.

(NARRATIVE ON FOLLOWING PAGE)

SC-2, 25 AUG 2011 to 22 SEP 2011