

CEOLA FOUR DEPARTURE (RNAV)

SC-2, 25 AUG 2011 to 22 SEP 2011

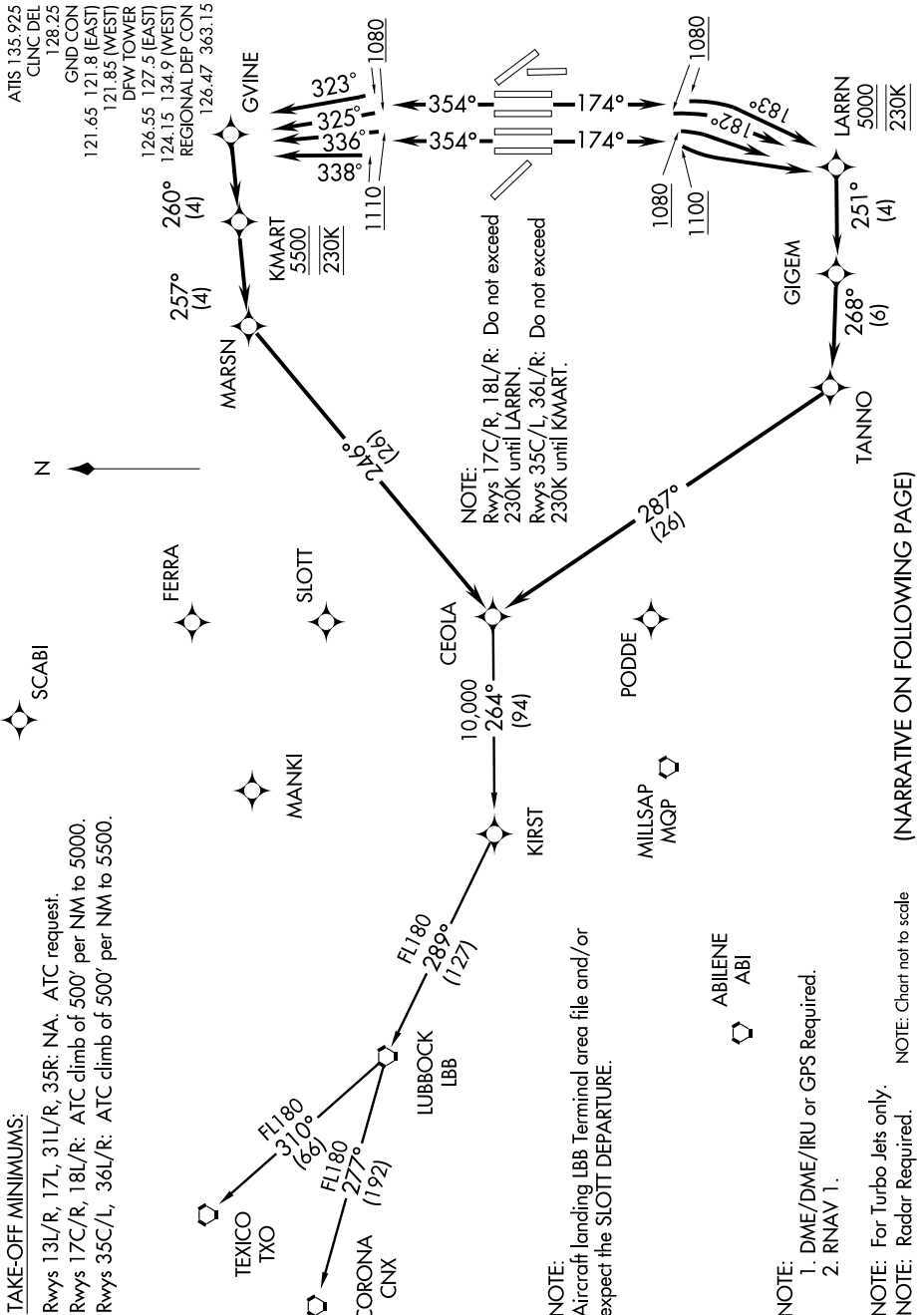
TAKE-OFF MINIMUMS:

Rwys 13L/R, 17L, 31L/R, 35R: NA. ATC request.

Rwys 17C/R, 18L/R: ATC climb of 500' per NM to 5000.

Rwys 35C/L, 36L/R: ATC climb of 500' per NM to 5500.

ATIS 135.925
 CLINC DEL 128.25
 GND.CON
 121.65 121.8 (EAST)
 121.85 (WEST)
 DFW TOWER
 126.55 127.5 (EAST)
 124.15 134.9 (WEST)
 REGIONAL DEP.CON
 126.47 363.15



CEOLA FOUR DEPARTURE (RNAV)

(NARRATIVE ON FOLLOWING PAGE)

SC-2, 25 AUG 2011 to 22 SEP 2011