

(AKUNA3.AKUNA) 10098

SL-6039 (FAA)

DALLAS-FORT WORTH INTL (DFW)
DALLAS-FORT WORTH, TEXAS

AKUNA THREE DEPARTURE (RNAV)

ATIS 135.925
 CLNC DEL 128.25
 GND CON
 121.65 121.8 (EAST)
 121.85 (WEST)
 DFW TOWER
 126.55 127.5 (EAST)
 124.15 134.9 (WEST)
 REGIONAL DEP CON
 118.55 290.35 (RWY 17R/C)
 126.47 363.15 (RWY 18L/R)
 125.12 353.95 (RWYS 35L/C and 36L/R)

ZEMMA

ARDMORE
ADM

EAKER

MCALISTER
MLC

NOTE: 1. DME/DME/IRU or GPS Required
 2. RNAV 1

TAKE-OFF MINIMUMS

Rwys 17C/R, 18L/R, 35L/C, 36L/R: Standard with a minimum climb of 500' per NM to 5000.

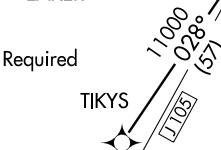
Rwys 13L/R, 17L, 31L/R, 35R: NA- Air Traffic.

TAKE-OFF RWYS 17C/R: Do not exceed 240K until JGIRL.
 TAKE-OFF RWYS 18L/R: Do not exceed 240K until YAMEL.
 TAKE-OFF RWYS 35L/C: Do not exceed 240K until CUZEN.
 TAKE-OFF RWYS 36L/R: Do not exceed 240K until HAZKL.

NOTE: For TURBOJET Aircraft only.

NOTE: For non-GPS equipped aircraft departing Rwys 17C/R and 35C, CVE must be operational.

NOTE: For non-GPS equipped aircraft departing Rwy 35L, FUZ must be operational.



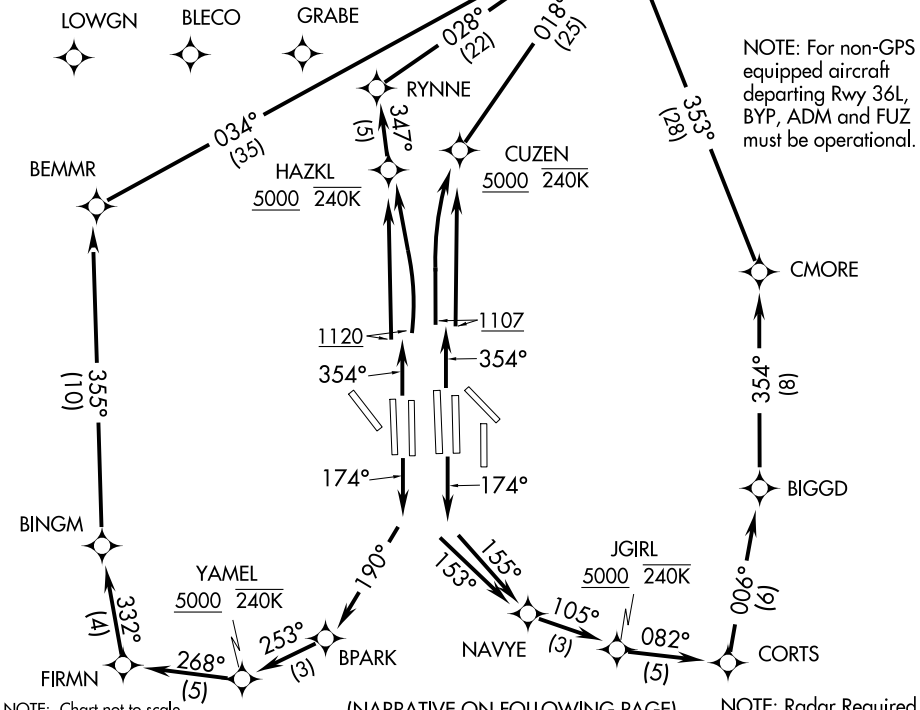
NOTE: For non-GPS equipped aircraft departing Rwys 18L/R, FUZ and CVE must be operational.

NOTE: For non-GPS equipped aircraft departing Rwy 36R, BYP and ADM must be operational.

NOTE: For non-GPS equipped aircraft departing Rwy 36L, BYP, ADM and FUZ must be operational.

SC-2, 25 AUG 2011 to 22 SEP 2011

SC-2, 25 AUG 2011 to 22 SEP 2011



NOTE: Chart not to scale.

(NARRATIVE ON FOLLOWING PAGE)

NOTE: Radar Required.

AKUNA THREE DEPARTURE (RNAV)

(AKUNA3.AKUNA) 10098

DALLAS-FORT WORTH, TEXAS
DALLAS-FORT WORTH INTL (DFW)