

WAAS CH 70701 W32A	APP CRS 318°	Rwy Idg 5000 TDZE 73 Apt Elev 75
--	------------------------	---

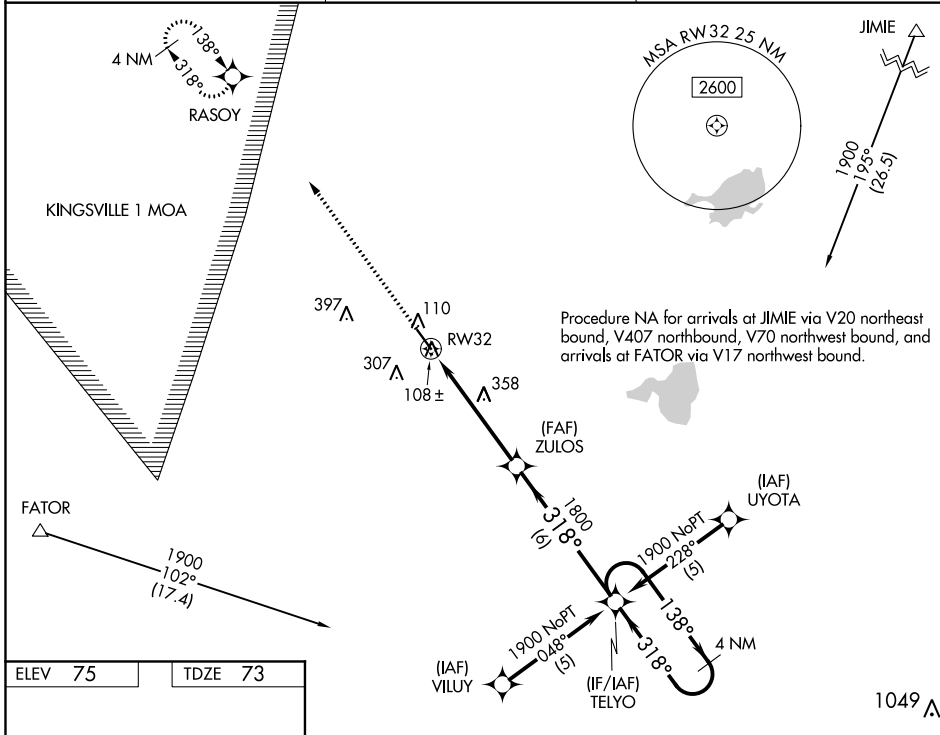
RNAV (GPS) RWY 32

SOUTH TEXAS INTL AT EDINBURG (E.B.G)

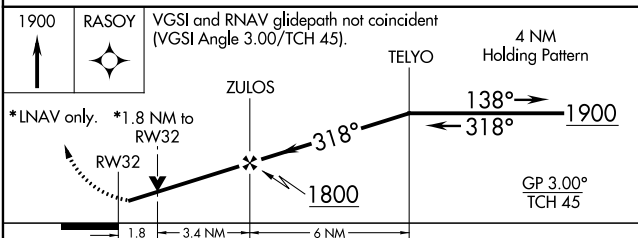
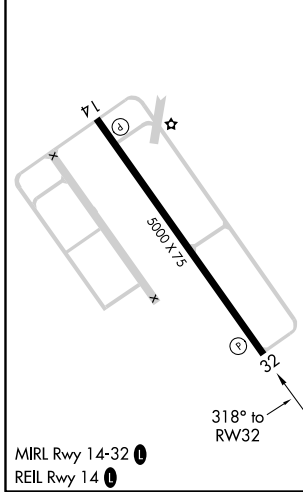
Visibility reduction by helicopters NA. DME/DME RNP-0.3 NA.
For uncompensated Baro-VNAV systems, LNAV/VNAV NA below -15°C (5°F) or above 48°C (120°F).

MISSED APPROACH: Climb to 1900 direct RASOY and hold.

AWOS-3 118.025	CORPUS APP CON 121.0 377.2	UNICOM 122.8 (CTAF) 0
--------------------------	--------------------------------------	---------------------------------



ELEV 75	TDZE 73
---------	---------



	A	B	C	D
CATEGORY				
LPV DA		323-3/4	250 (300-3/4)	
LNAV/VNAV DA		361-1	288 (300-1)	
LNAV MDA	660-1	587 (600-1)	660-1 1/2 587 (600-1 1/2)	660-1 3/4 587 (600-1 3/4)
CIRCLING	660-1	585 (600-1)	660-1 1/2 585 (600-1 1/2)	660-2 585 (600-2)

SC-3, 25 FEB 2021 to 25 MAR 2021

SC-3, 25 FEB 2021 to 25 MAR 2021