

WAAS CH 53618 W10A	APP CRS 097°	Rwy Idg 4750 TDZE 756 Apt Elev 759
--	------------------------	---

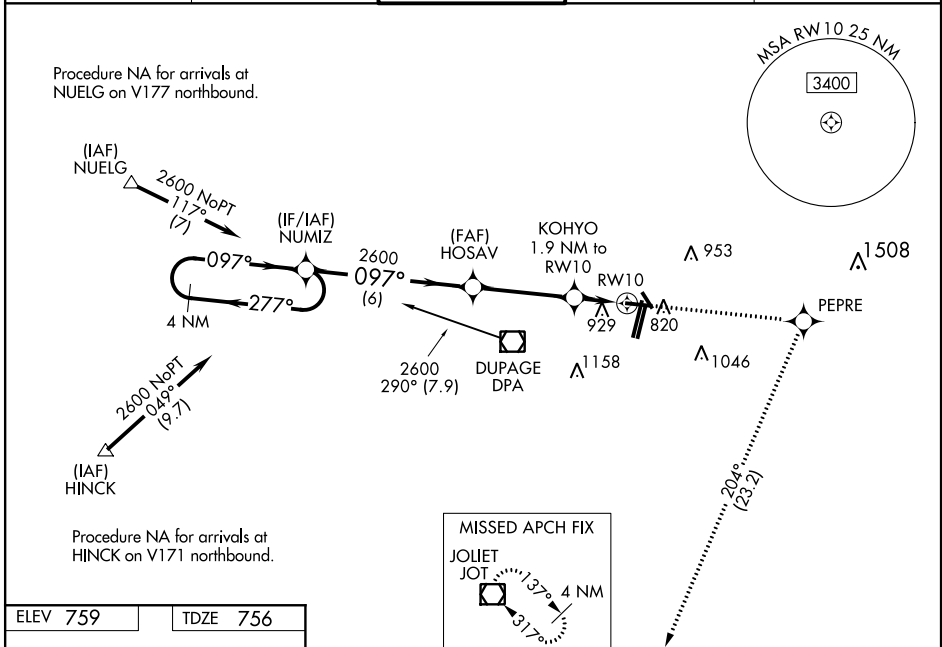
RNAV (GPS) RWY 10

DUPAGE (DPA)

⚠ For uncompensated Baro-VNAV systems, LNAV/VNAV NA below -16°C (4°F) or above 54°C (130°F). DME/DME RNP-0.3 NA. When local altimeter setting not received, use Aurora altimeter setting and increase all DA 37 feet and all MDA 40 feet, increase LNAV Cat D visibility ¼ mile. VDP and Baro-VNAV NA when using Aurora altimeter setting. Circling Rwy 15, 28, 33 NA at night.

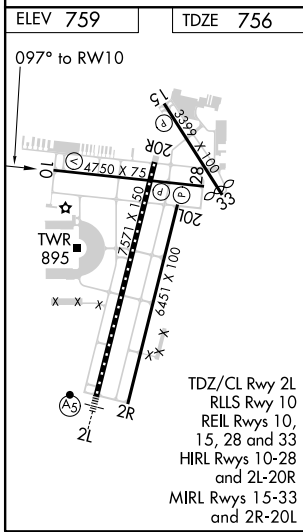
MISSED APPROACH: Climb to 2600 direct PEPRE and right turn on track 204° to JOT VOR/DME and hold.

ATIS 132.075	CHICAGO APP CON 133.5 349.0	DUPAGE TOWER 120.9 257.8	GND CON 121.8	CLNC DEL 119.75
------------------------	---------------------------------------	---	-------------------------	---------------------------



EC-3, 25 FEB 2021 to 25 MAR 2021

EC-3, 25 FEB 2021 to 25 MAR 2021



4 NM Holding Pattern	2600	PEPRE	JOT
	↑	✦	tr 204°
NUMIZ	HOSAV	KOHYO	*LNAV only
2600 ← -277°	2600	1.9 NM to RW10	
GP 3.00°	2600	*1.2 NM to RW10	
TCH 50			
	6 NM	3.7 NM	0.7
	A	B	C
CATEGORY			
LPV DA		956-3/4	200 (200-3/4)
LNAV/VNAV DA		1244-13/4	488 (500-13/4)
LNAV MDA	1180-1	424 (500-1)	1180-13/4 424 (500-13/4)
CIRCLING	1260-1	501 (600-1)	1360-13/4 601 (700-13/4) 1360-2 601 (700-2)