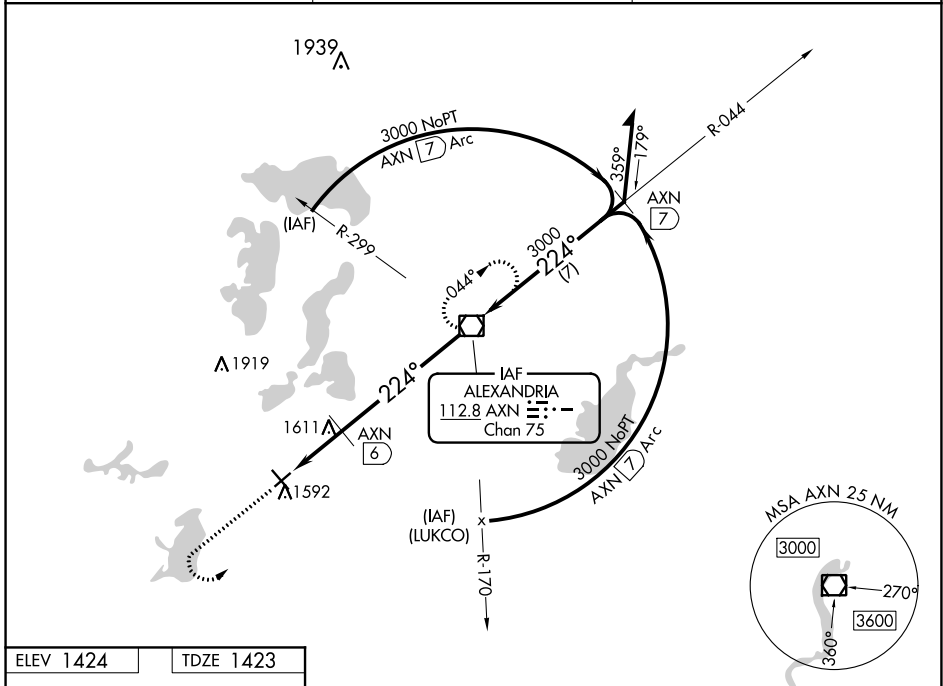


VOR/DME AXN <b>112.8</b> Chan 75	APP CRS <b>224°</b>	Rwy ldg TDZE <b>4098</b> <b>1423</b>	Apt Elev <b>1424</b>
--	------------------------	--	-------------------------

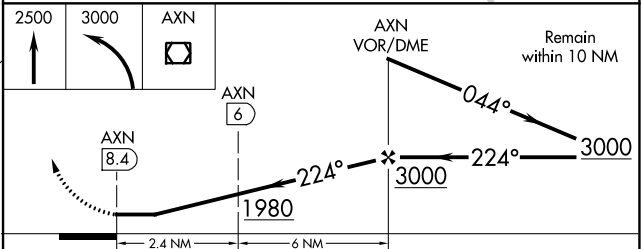
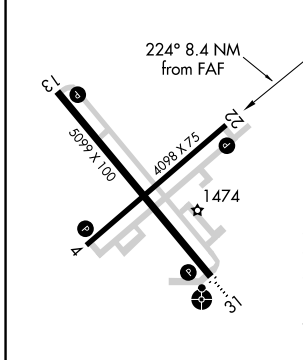
**VOR RWY 22**  
CHANDLER FIELD (AXN)

**▼** Rwy 22 helicopter visibility reduction below  $\frac{3}{4}$  SM NA. MISSED APPROACH: Climb to 2500 then climbing left turn to 3000 direct to AXN VOR/DME and hold.

ASOS <b>118.375</b>	MINNEAPOLIS CENTER <b>126.1 269.2</b>	UNICOM <b>123.0 (CTAF) 0</b>
------------------------	--	---------------------------------



ELEV 1424	TDZE 1423
-----------	-----------



CATEGORY	DME MINIMUMS			
	A	B	C	D
S-22	1980-1 557 (600-1)		1980-1½ 557 (600-1½)	1980-1¾ 557 (600-1¾)
CIRCLING	1980-1 556 (600-1)		1980-1½ 556 (600-1½)	1980-2 556 (600-2)
S-22	1880-1 457 (500-1)		1880-1¼ 457 (500-1¼)	1880-1½ 457 (500-1½)
CIRCLING	1920-1 496 (500-1)		1920-1½ 496 (500-1½)	1980-2 556 (600-2)

REIL Rwys 4, 13 and 22 (1)  
MIRL Rwys 4-22 and 13-31 (1)  
FAF to MAP 8.4 NM

Knots	60	90	120	150	180
Min:Sec	8:24	5:36	4:12	3:22	2:48

NC-1, 25 FEB 2021 to 25 MAR 2021

NC-1, 25 FEB 2021 to 25 MAR 2021